

INDIVIDUAL PIN GAUGES WITH HANDLE (0.01MM STEP)

- Meet DIN2269, grade 1
- Diameter range: $\varnothing 1.00 \sim \varnothing 20.00 \text{mm}$
- Available in sizes with two decimal places, for example 5.56mm, 16.00mm
- Diameter accuracy: $\pm 1 \mu\text{m}$
- Made of alloy steel
- Hardness HRC62-65

Diameter $\varnothing d$ (mm)
1.00, 1.01, 1.02, 1.03, ..., 2.00
2.01, 2.02, 2.03, 2.04, ..., 3.00
3.01, 3.02, 3.03, 3.04, ..., 4.00
4.01, 4.02, 4.03, 4.04, ..., 5.00
5.01, 5.02, 5.03, 5.04, ..., 6.00
6.01, 6.02, 6.03, 6.04, ..., 7.00
7.01, 7.02, 7.03, 7.04, ..., 8.00
8.01, 8.02, 8.03, 8.04, ..., 9.00
9.01, 9.02, 9.03, 9.04, ..., 10.00

Diameter $\varnothing d$ (mm)
10.01, 10.02, 10.03, 10.04, ..., 11.00
11.01, 11.02, 11.03, 11.04, ..., 12.00
12.01, 12.02, 12.03, 12.04, ..., 13.00
13.01, 13.02, 13.03, 13.04, ..., 14.00
14.01, 14.02, 14.03, 14.04, ..., 15.00
15.01, 15.02, 15.03, 15.04, ..., 16.00
16.01, 16.02, 16.03, 16.04, ..., 17.00
17.01, 17.02, 17.03, 17.04, ..., 18.00
18.01, 18.02, 18.03, 18.04, ..., 19.00
19.01, 19.02, 19.03, 19.04, ..., 20.00

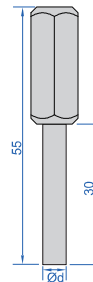


4214-5D00

Code

4214-□□□□

Unit: mm



Ordering examples:

Diameter	Code
5.56mm	4214-5D56
16.00mm	4214-16D00

Note : "D" stands for "."